

Health Crisis KOS: Facing the World Wide Health Crisis with Vocabulary Control and Standards

Managing Health Policy KOS during the COVID-19 Pandemic and Beyond

Christina Rudyj, *Senior Technical Product Manager*, Health Affairs

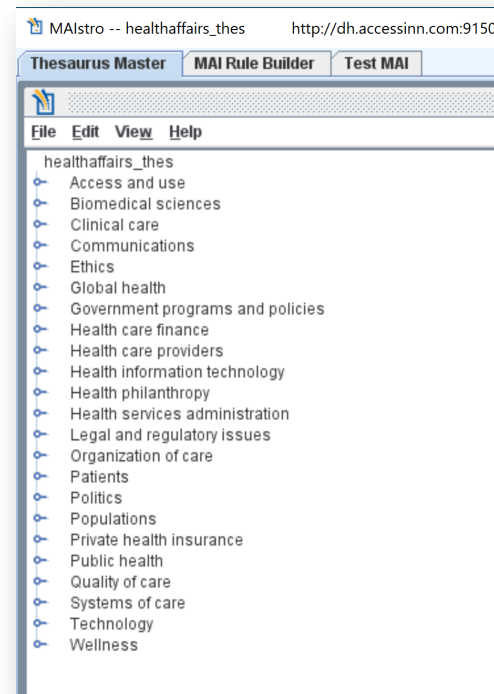
September 9, 2020

Health policy KOS considerations

- Faster research observations and outcomes
- The real-time news cycle
- Uncertainty in government policies
- COVID-19 Pandemic's impact on the visibility of social issues

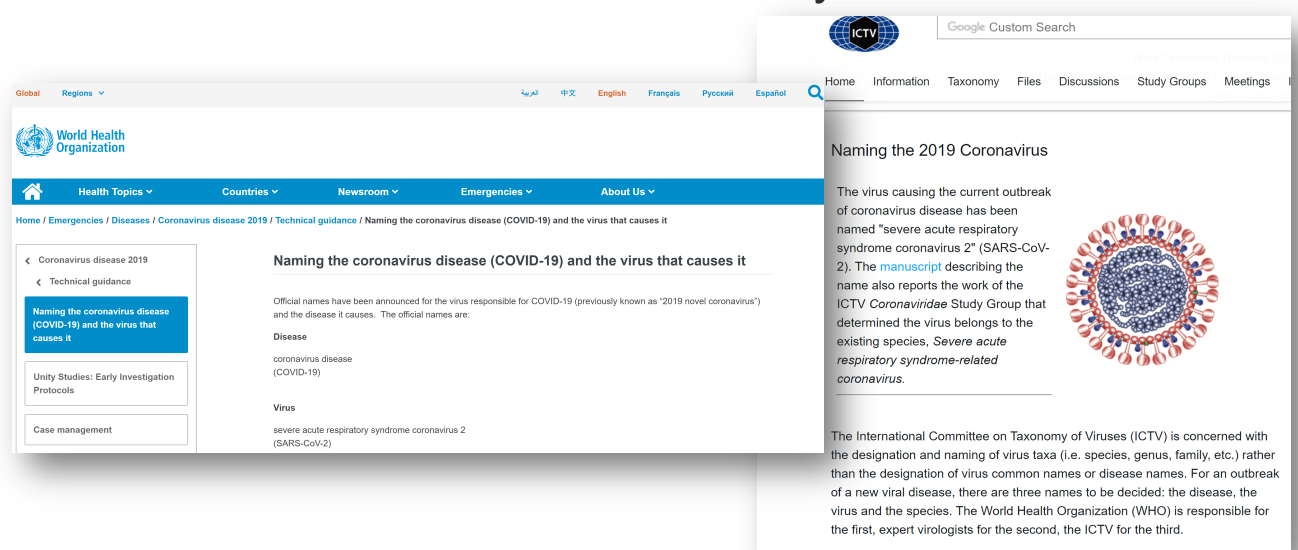
Building and maintaining a relevant vocabulary

- Health policy is a social science
 - Scope of vocabulary covers numerous areas
 - The top level of Health Affairs' health policy thesaurus:



Sources for vocabulary

- Examples of sources for maintaining and developing an accurate vocabulary:
 - World Health Organization
 - International Committee on Taxonomy of Viruses
 - DSM-5
 - Health Care Provider Taxonomy



Putting health policy KOS into practice

- 1200 term hierarchical thesaurus on all knowledge management platforms:
 - Manuscript management system
 - Website
 - Marketing and customer databases

```
<skos:hasTopConcept rdf:resource="1727" />
<skos:hasTopConcept rdf:resource="73" />
<skos:hasTopConcept rdf:resource="54" />
<skos:hasTopConcept rdf:resource="57" />
<skos:hasTopConcept rdf:resource="2163" />
<skos:hasTopConcept rdf:resource="2190" />
<skos:hasTopConcept rdf:resource="151" />
</skos:ConceptScheme>
<skos:Concept rdf:about="1808">
  <skosxl:prefLabel>
    <skosxl:label>
      <skosxl:literalForm xml:lang="en">Wellness</skosxl:literalForm>
    </skosxl:label>
  </skosxl:prefLabel>
  <skosxl:altLabel>
    <skosxl:label>
      <skosxl:literalForm xml:lang="en">Health maintenance</skosxl:literalForm>
    </skosxl:label>
  </skosxl:altLabel>
  <skosxl:altLabel>
    <skosxl:label>
      <skosxl:literalForm xml:lang="en">Personal health</skosxl:literalForm>
    </skosxl:label>
  </skosxl:altLabel>
</skos:Concept>
```

10.1377/hlthaff.2014.1376	Article	Personalized Medicine: Worth Its Cost?
10.1377/hlthaff.2011.1054	Article	'Personalized Medicine' To Identify Genetic Risks For Type 2 Diabetes And Focus Prevention: C
10.1377/hlthaff.2011.0962	Article	What Happens When The Bubble Bursts?
10.1377/hblog20100819.006638	Digital Object Pub	Conference: Comparative Effectiveness And Personalized Medicine
10.1377/hblog20130617.032168	Digital Object Pub	Collaborative Filtering: An Interim Approach To Identifying Clinical Doppelgängers
10.1377/hlthaff.2019.00027	Article	Errata
10.1377/hlthaff.2018.05268	Article	Cystic Fibrosis And Ivacaftor Use: The Authors Reply

Putting health policy KOS into practice (cont'd)

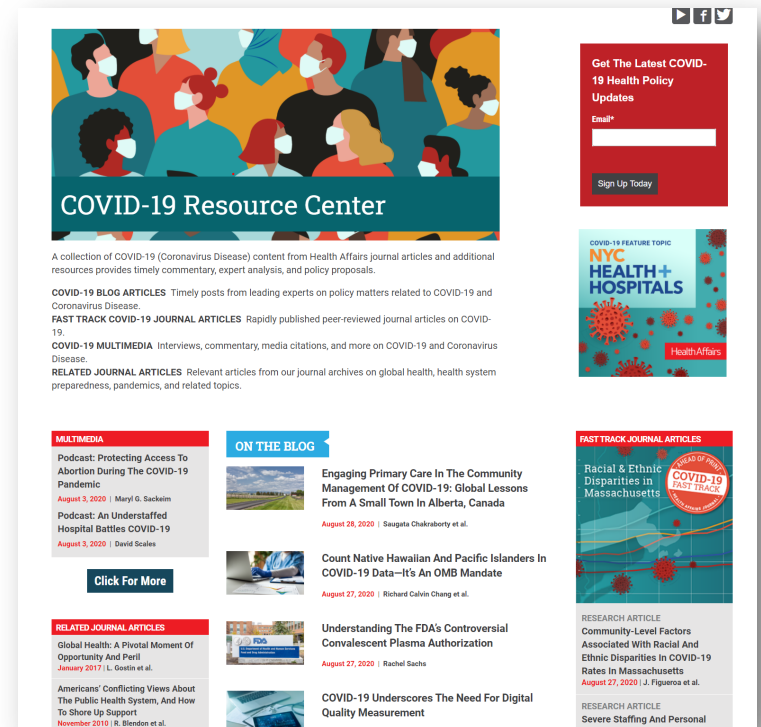
- Always evolving the main vocabulary
- Adding synonyms as needed
 - Analysis of search engine search terms
 - Analysis of user behavior
- Adjust machine reading rules for content scanning accuracy

Non-Preferred Term	+	-	V
Race discrimination			
Race inequality			
Racial discrimination			
Racial inequality			
Racial prejudice			
Systemic racism			

Great Depression
 Social determinants of health
 Adverse childhood experiences
 Ethnic disparities
 Food
 Housing
 Integrating social services & health
 Racism
 Social exclusion
 Social gradients
 Social support networks
 Socioeconomic determinants of health
 Unemployment

Health policy KOS as part of the COVID- 19 content landscape

- Peer-reviewed studies published in a faster format:
 - Fast Track Ahead of Print
- Mixed content organized in topic oriented manner
 - COVID-19 resource center
<https://www.healthaffairs.org/covid-19-coronavirus-disease>
 - Content featuring NYC H+H
<https://www.healthaffairs.org/nyc>

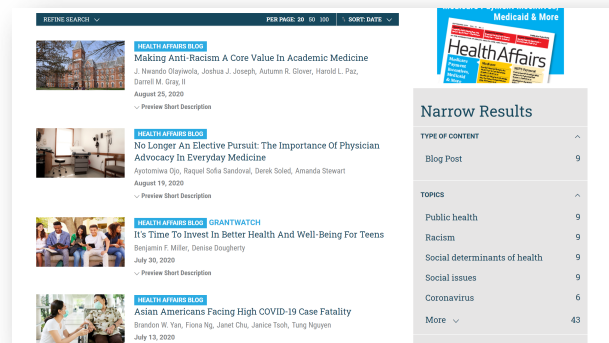


Relevant KOS
reflected in
historical
content as well
as current
content

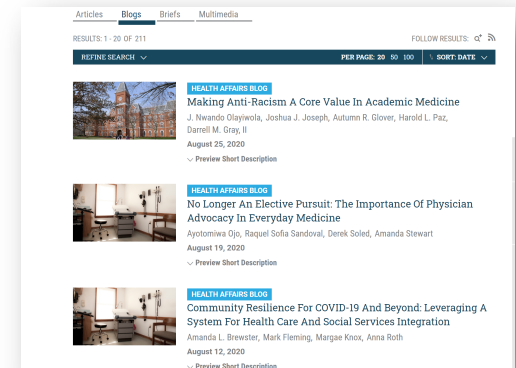
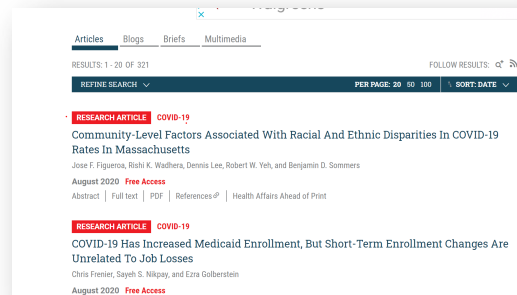
- Appropriate tag metadata drives historical content to relevance:
 - Stern, A.M., Cetron, M.S., Markel, H. "Closing the Schools: Lessons from the 1918-19 U.S. Influenza Pandemic." Health Affairs, 2009, 28(6): 1066-78.
<https://www.healthaffairs.org/doi/10.1377/hlthaff.28.6.w1066>
 - Stern, A.M., Markel, H. "The History Of Vaccines And Immunization: Familiar Patterns, New Challenges." Health Affairs, 2005, 24(3): 611-621.
<https://www.healthaffairs.org/doi/10.1377/hlthaff.24.3.611>

Relevant KOS
reflected in
historical
content as well
as current
content
(cont'd)

- Appropriate tag metadata highlights relevant current content:
 - COVID-19 and Racism



- COVID-19 and Social Determinants of Health



Looking to the future and beyond for Health Policy KOS

- Keeping vocabulary relevant
- Maintaining quality of metadata
- Open discussions about knowledge management within the context of the “real world”

- For questions or further discussion, contact:
Christina Rudyj, Health Affairs,
Sr. Technical Product Manager
crudyj@projecthope.org